



WC CC/NC 2015

Courses for World Cup Cross-Country
and Nordic Combined December 2015



Cross-Country

Saturday

Ladies

7,5 km C + 7,5 km F

Skiathlon

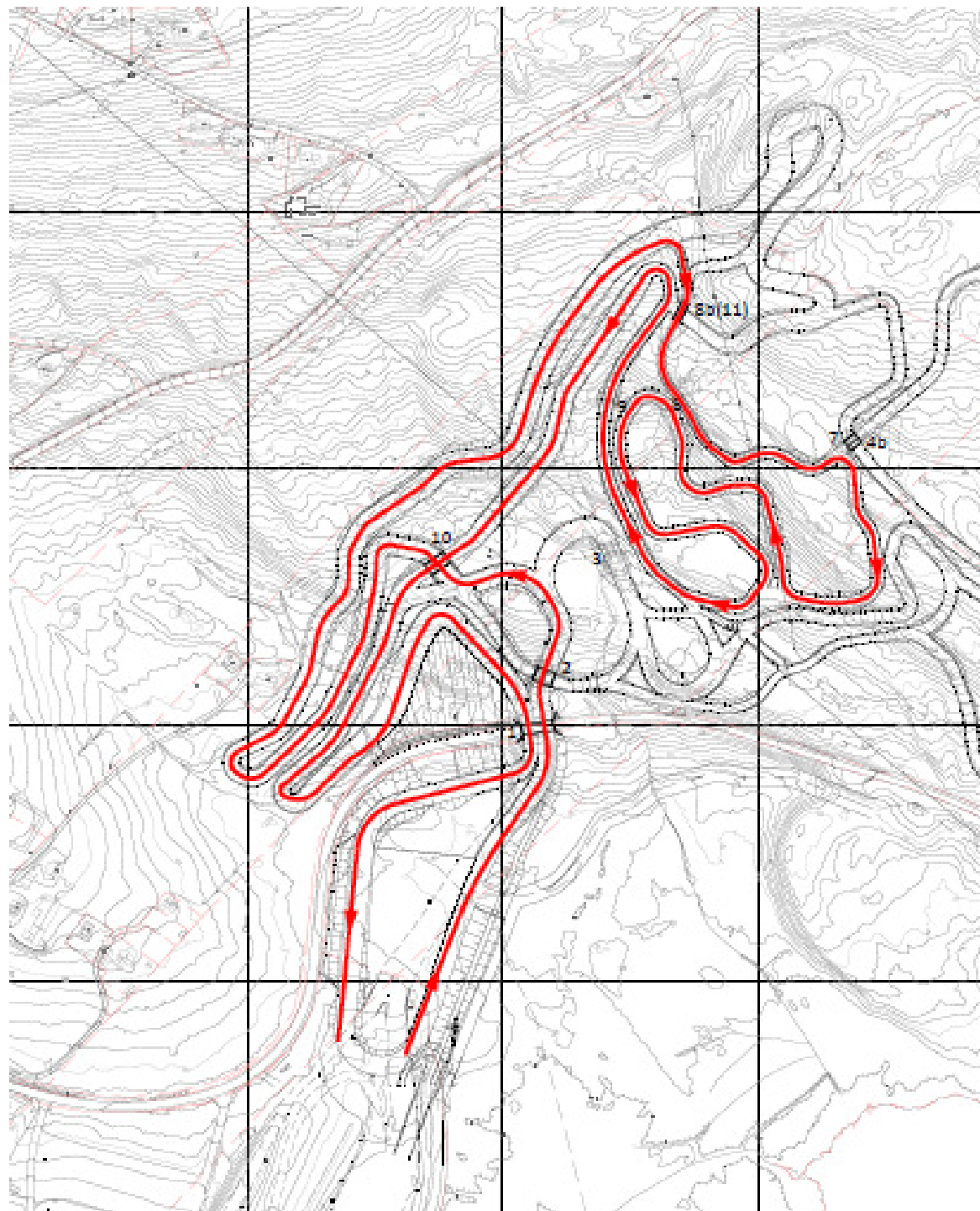
2x3,75km RED

Men

15,0 km C + 15,0 km F

Skiathlon

4x3,75km RED





Cross-Country

Saturday

Ladies

7,5 km C + **7,5 km F**

Skiathlon

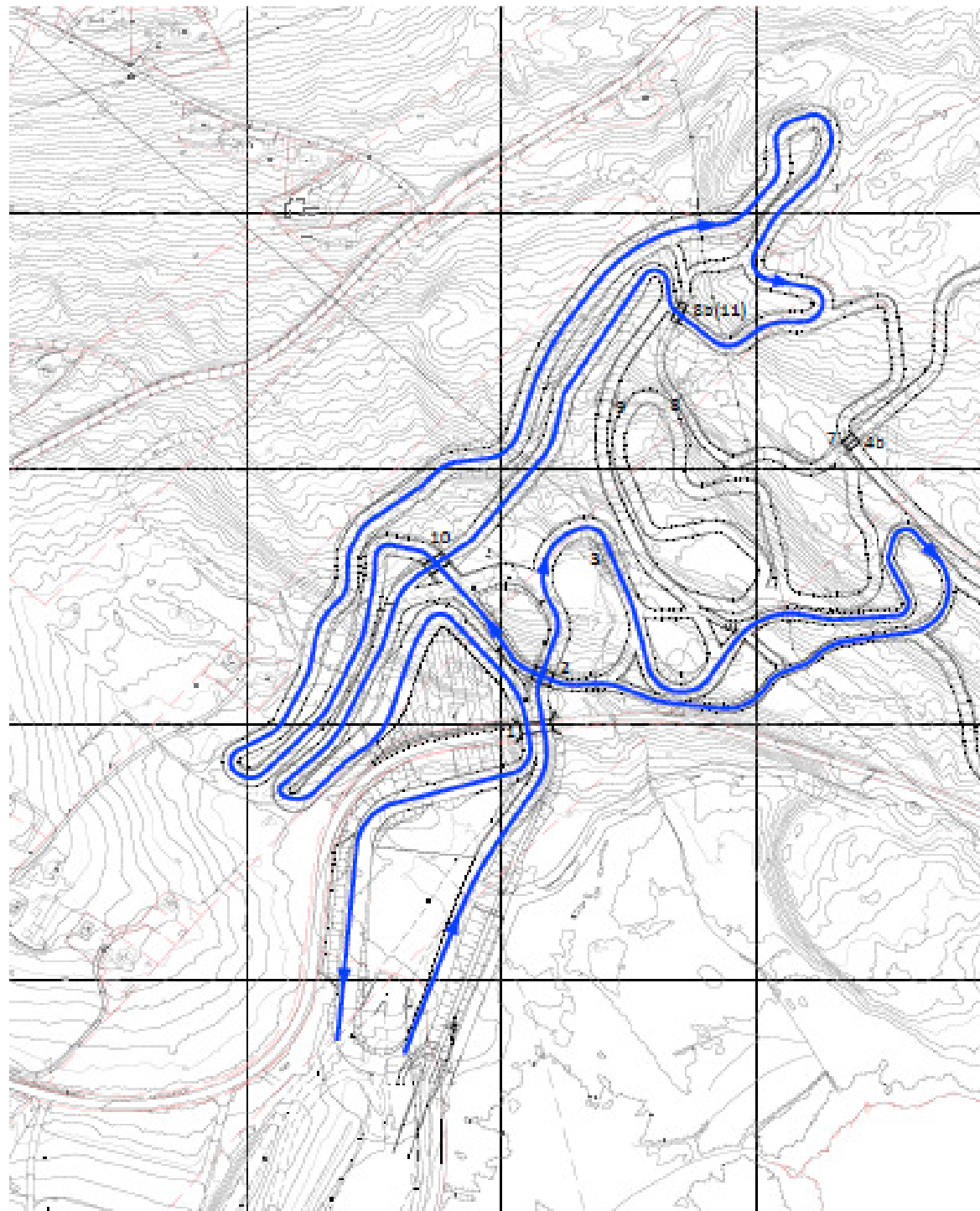
2x3,75km BLUE

Men

15,0 km C + **15,0 km F**

Skiathlon

4x3,75km BLUE





Cross-Country

Sunday

RELAY

Ladies and Men

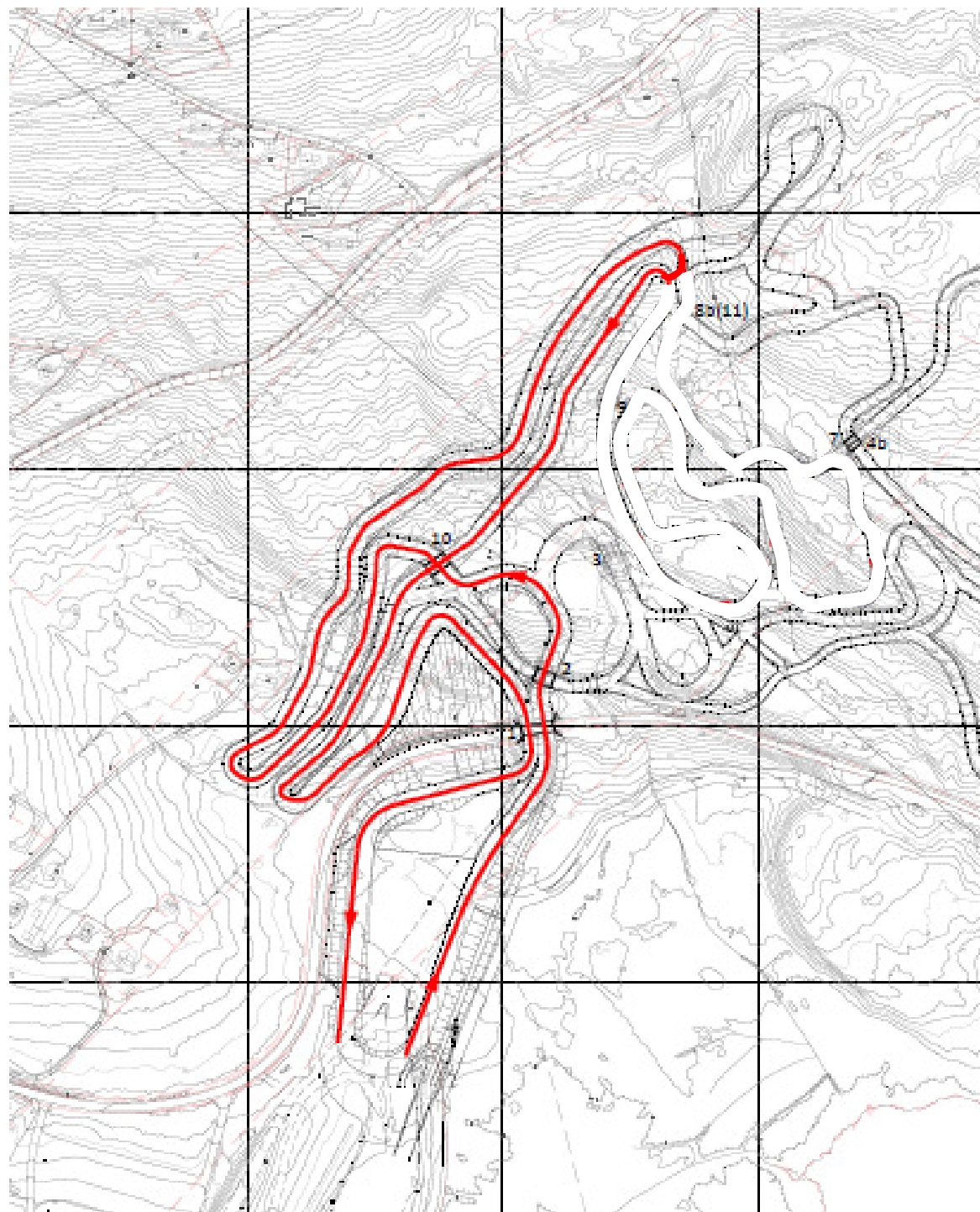
All in one course

1. and 2. leg

2,5km

3. and 4. leg

2,5km

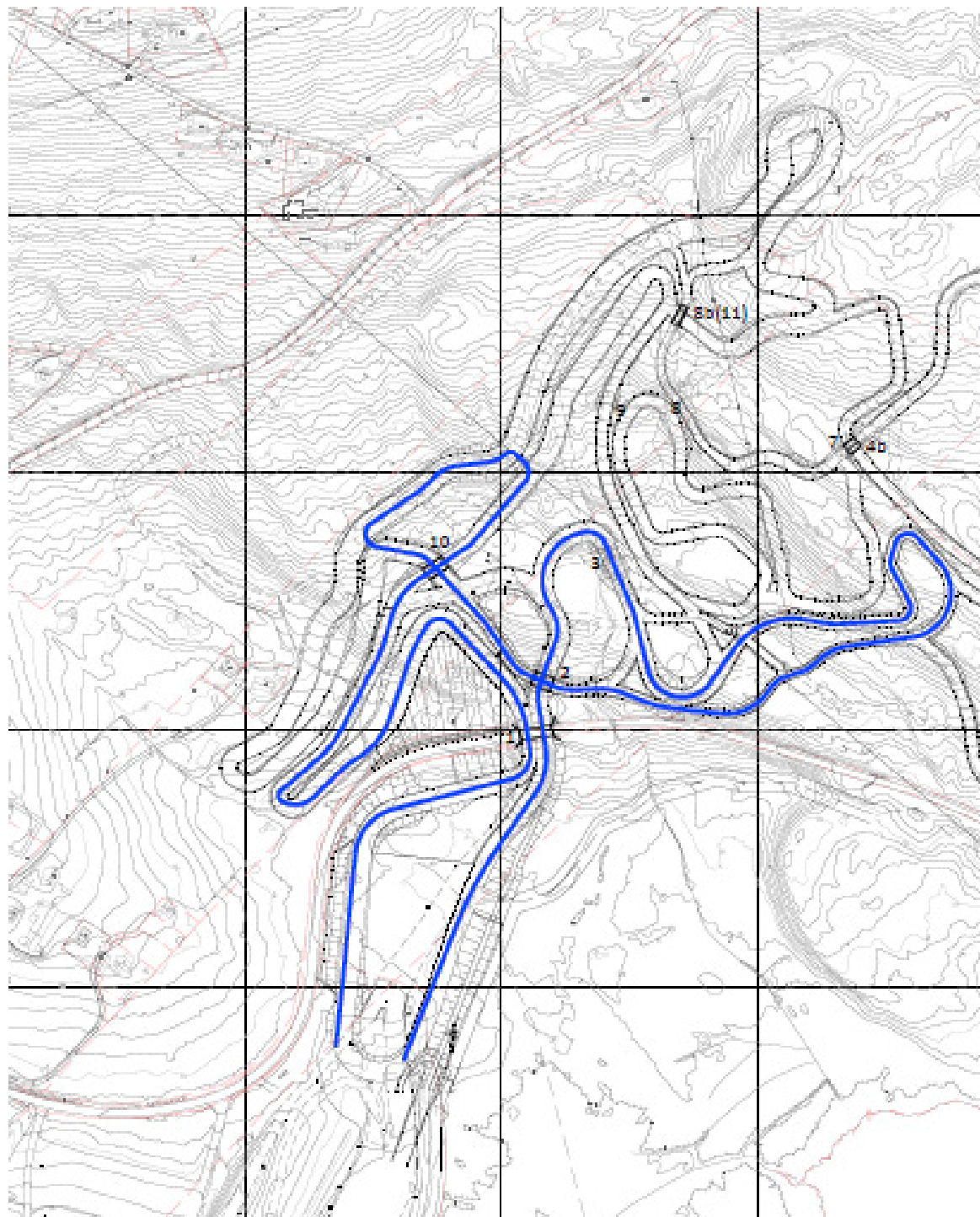




Nordic Combined

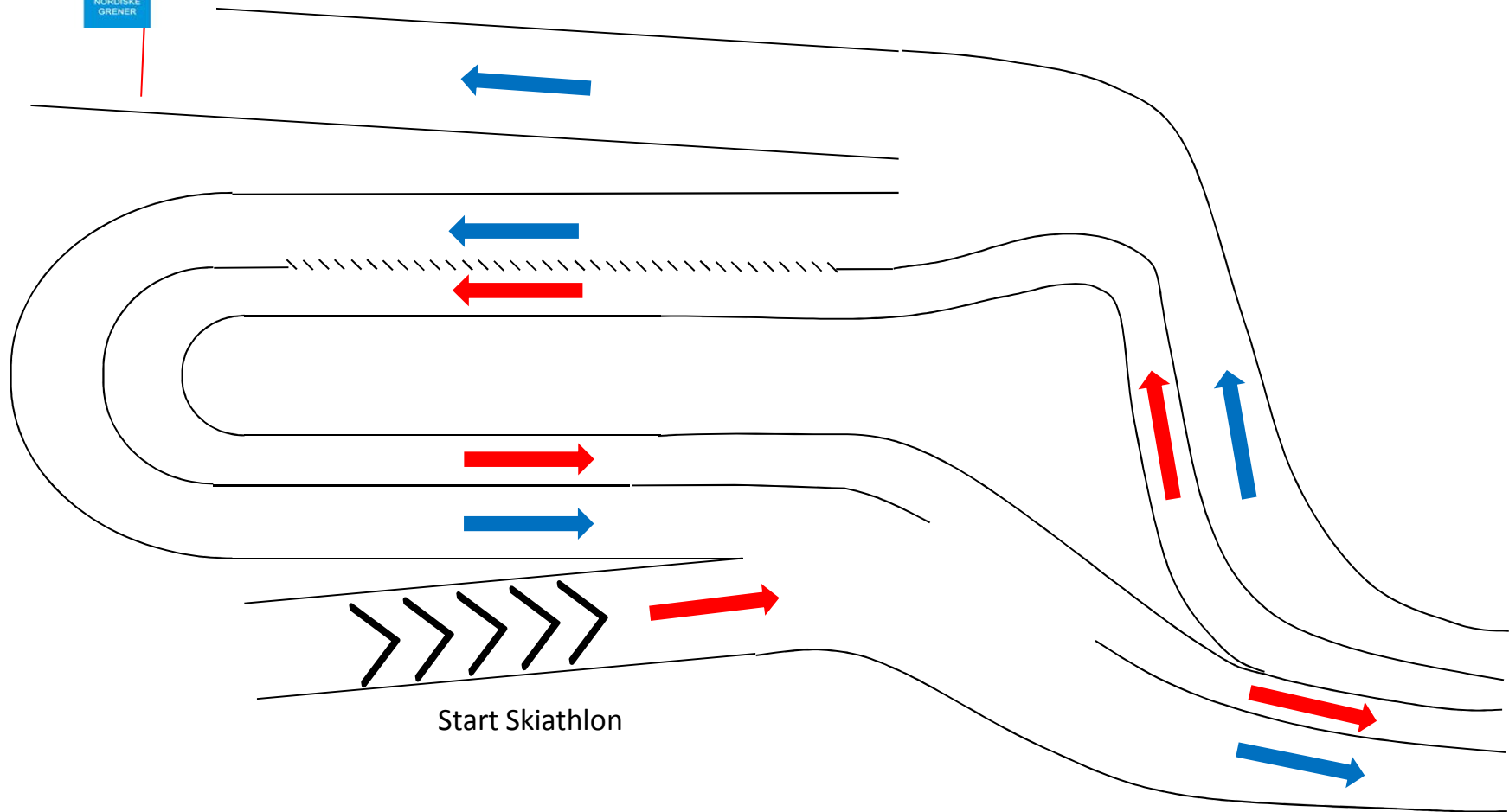
Saturday and Sunday

4 x 2,5 km Free



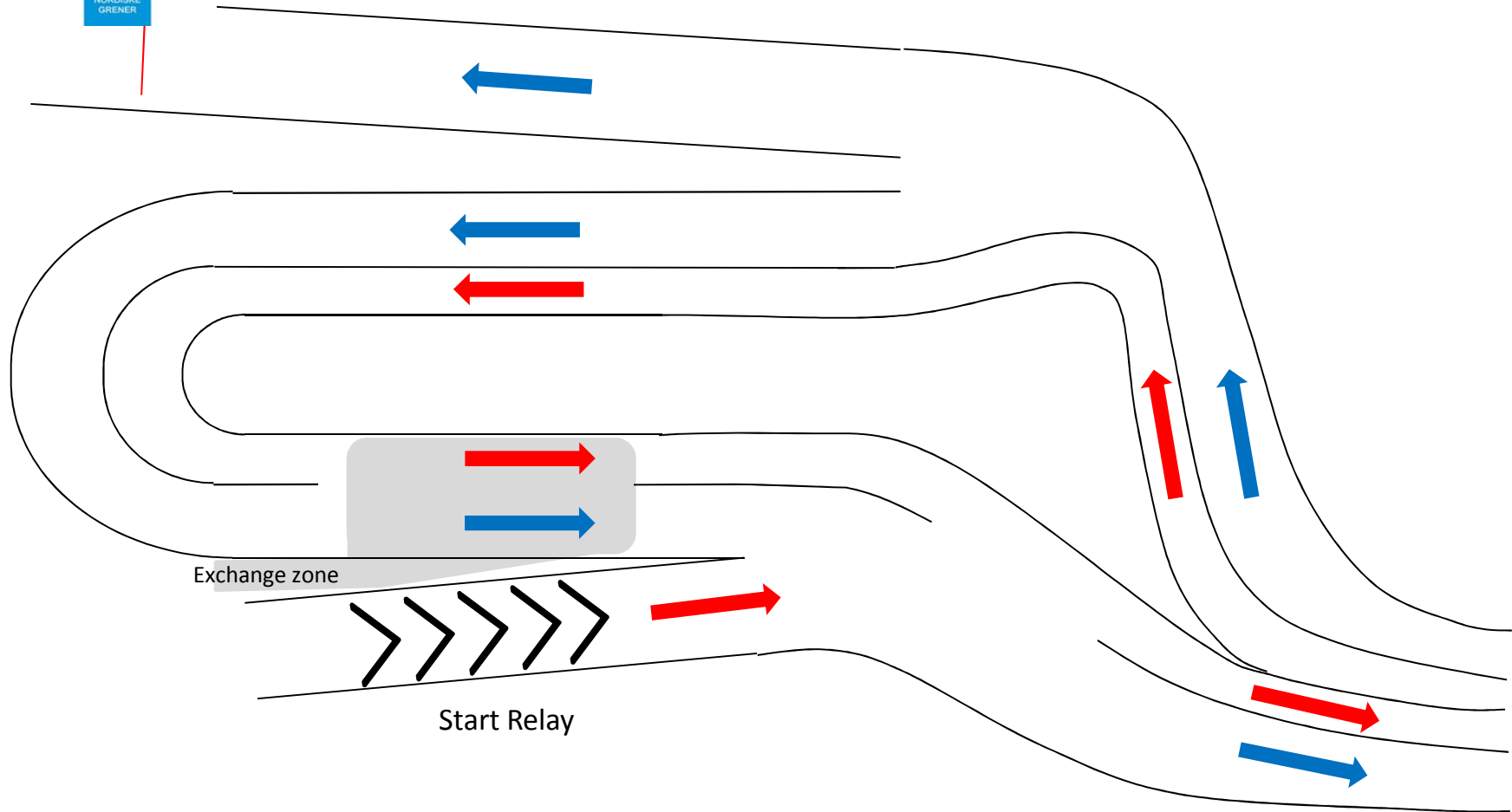


Stadium layout Saturday





Stadium layout Sunday



Exchange zone

Start Relay



Stadium layout NC

